



EXPOSÉ

BRASILEA 

BRASILEA, THE SWISS-BRAZILIAN ART AND CULTURE FOUNDATION AT BASEL RHEINHAFEN

The Brasilea Foundation pioneered the idea of displaying the Port of Switzerland as a cultural area 15 years ago. Through the conversion of the old ship engine factory into an art and cultural centre, it has provided an impressive setting for more than 400 corporate and private events, thanks to its unique location in the tri-border region and its incomparable ambience.

WELCOME TO THE TRIANGLE

Due to its proximity to France and Germany, Basel has always been a popular meeting and conference location as national and international guests can get together quickly and easily. The Brasilea Foundation, located directly on the waterfront, houses the Wüthrich collection and an exhibition centre with focus on Brazilian art. International artists and cultural events make the building a lively place that carries over into every occasion. With direct views of the two neighbouring countries and the Rhine from every space, the converted workshop building provides a unique setting for all events. The various areas of the Brasilea Foundation can be rented during and between the three annual exhibitions.

Let us show you the possibilities that our building offers and assist you with your planning. As a full-service partner, we build bridges, establish contacts and facilitate cultural encounters between people, brands and companies. We offer professional expertise, personalised advice and comprehensive support from programme design to process organisation.

ACCESSIBLE WITH MULTIPLE OPTIONS

Three rooms over three floors with a total area of 960 m² may be hired separately or in combination, and can be fitted according to your wishes with media facilities, stage, catering, bars and individually designed interiors. Light-filled, high-ceilinged rooms offer a charming and friendly environment for your ideas.

An outstanding rooftop terrace is overlooking the dock, and with a clear view all around, can also be used in many ways.

The whole infrastructure is barriere-free conceived.

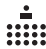

The eventsurfaces are offered free of event agencies.

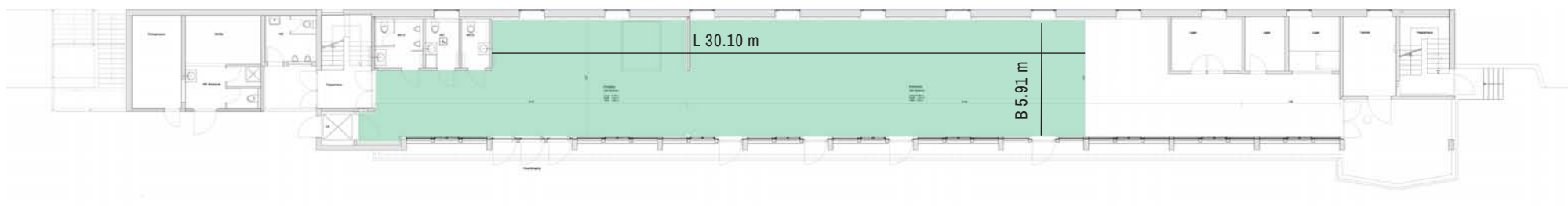


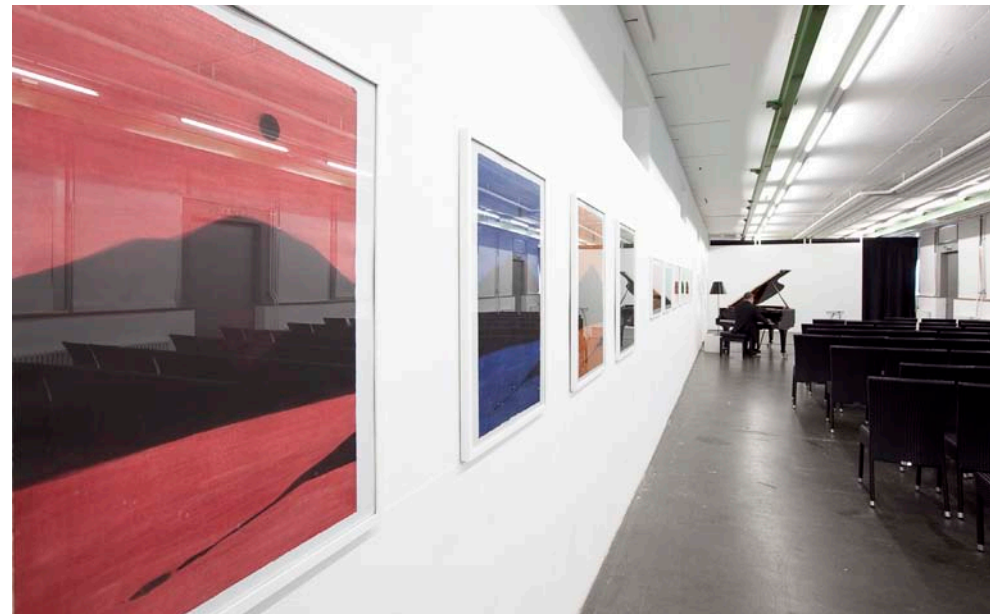
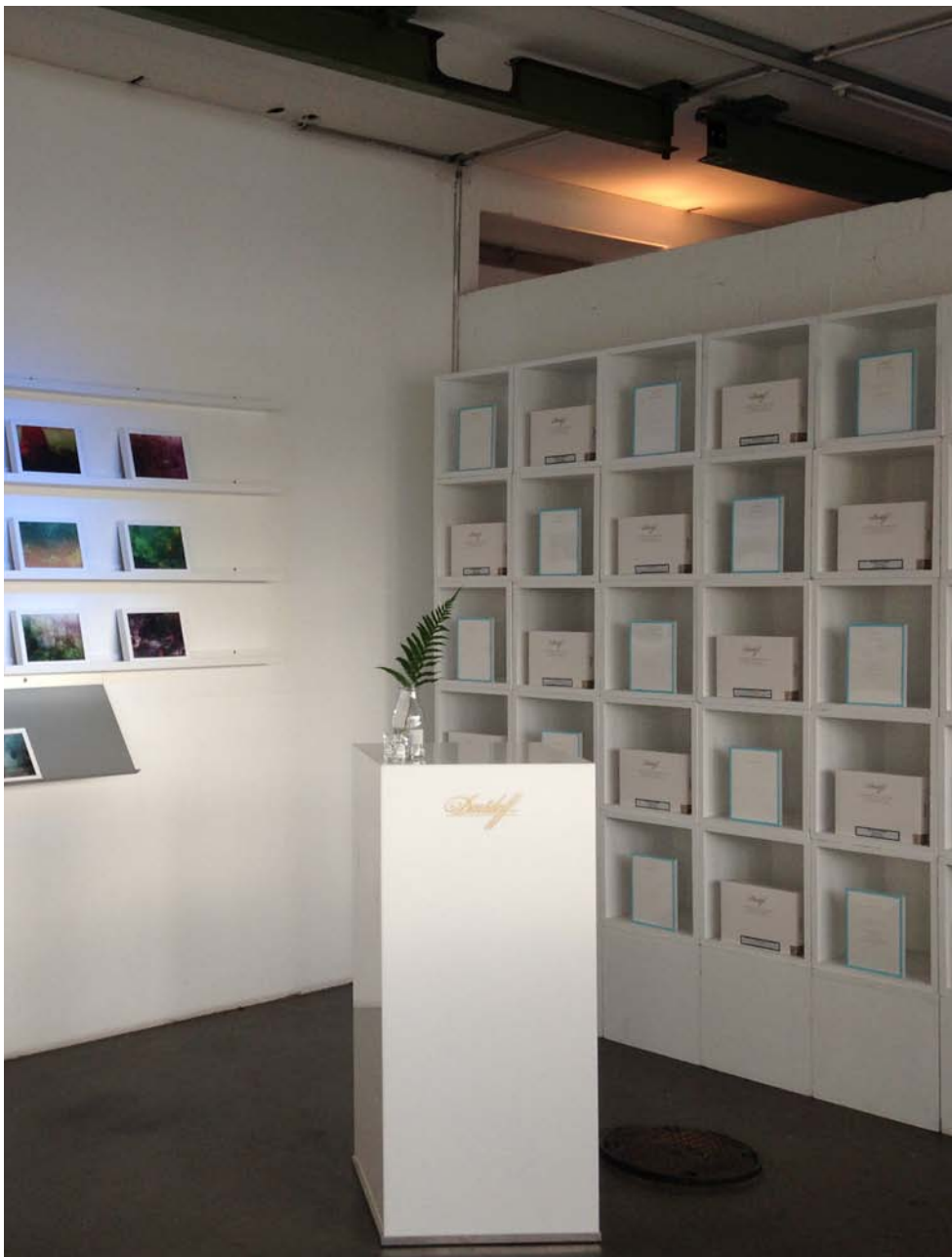
HARDFACTS

- total surface 260 m²
- max. capacity 350 people
- 2 separate entrances
- residents free area
- dimensions:
max. L 43.70 m / W 5.91 m / H 3.25 m
- delivery at ground level
- extensive electricity supply 1 X 36 A
- wifi & phone line, Bose Hi-Fi mobile
- toilets w/m & handicapped
- H-rails with crane through the whole floor
- min 1000.- CHF

SURFACES

				
CONCERT	DINNER	GALA	U-SHAPE	APÉRO
150	84	70	45	150







HARDFACTS

- total surface 350 m²
- max. capacity 420 people
- 2 separate entrances
- residents free area
- kitchen inclusive 2 dishwashers
- bar platform with illuminated barfurniture
- H-rails with crane through the whole floor
- 2 Sennheiser microphones
- dimensions:
max. L 50.72 m / W 6.84 m / H 3.69 m
- delivery by lift:
L 1.08 m / W 1.52 m / H 2.00 m
- separate double door towards rails:
W 2.70 m / H 2.00 m
- extensive electricity supply 1 X 36 A
- wifi & phone line, Bose Hi-Fi
- toilets w/m & handicapped
- 6 mobile walls to divide the space:
L 2.95 m / W 0.30 m / H 2.50 m
- min 1250.- CHF

SURFACES



CONCERT

200



DINNER

160



GALA

120



U-SHAPE

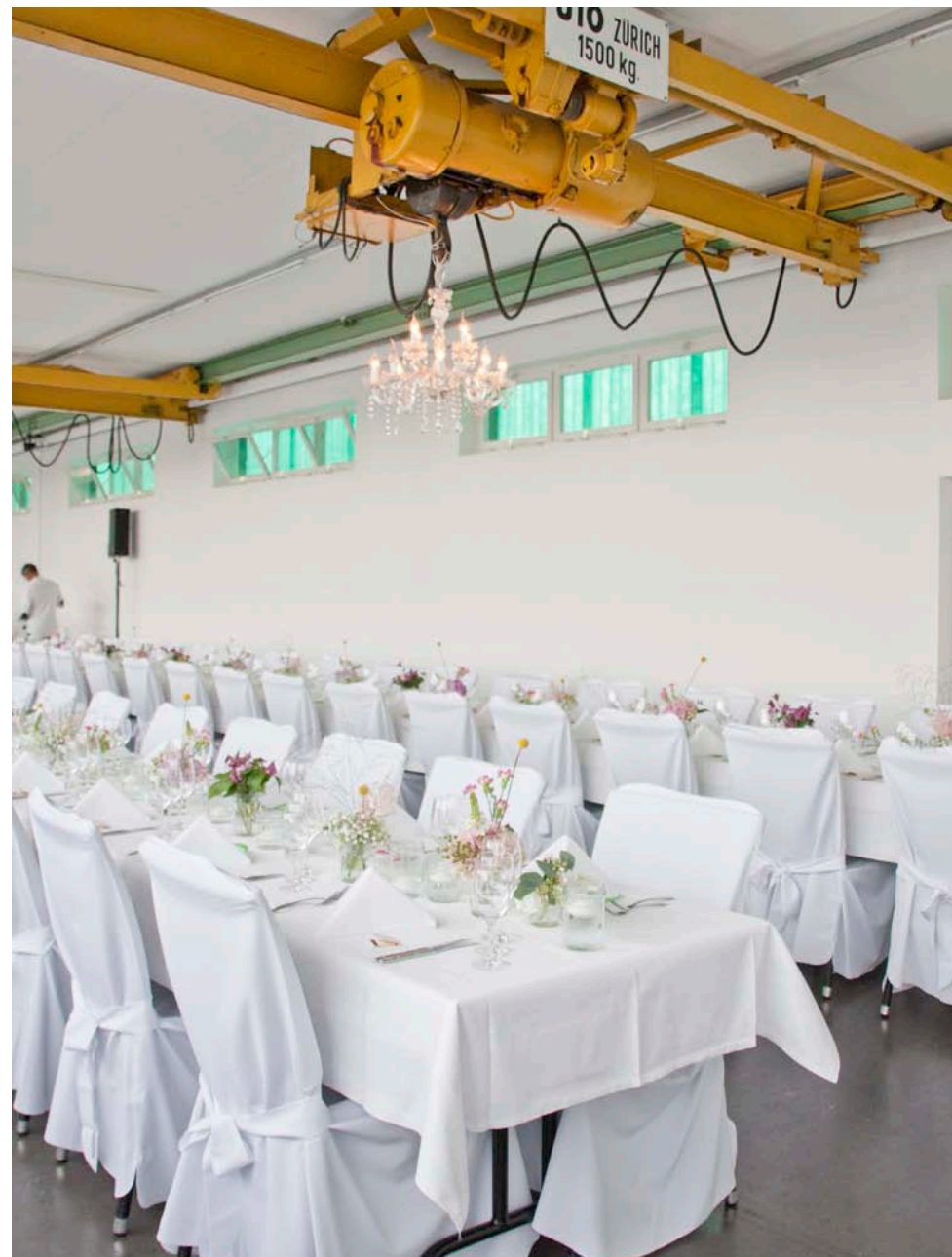
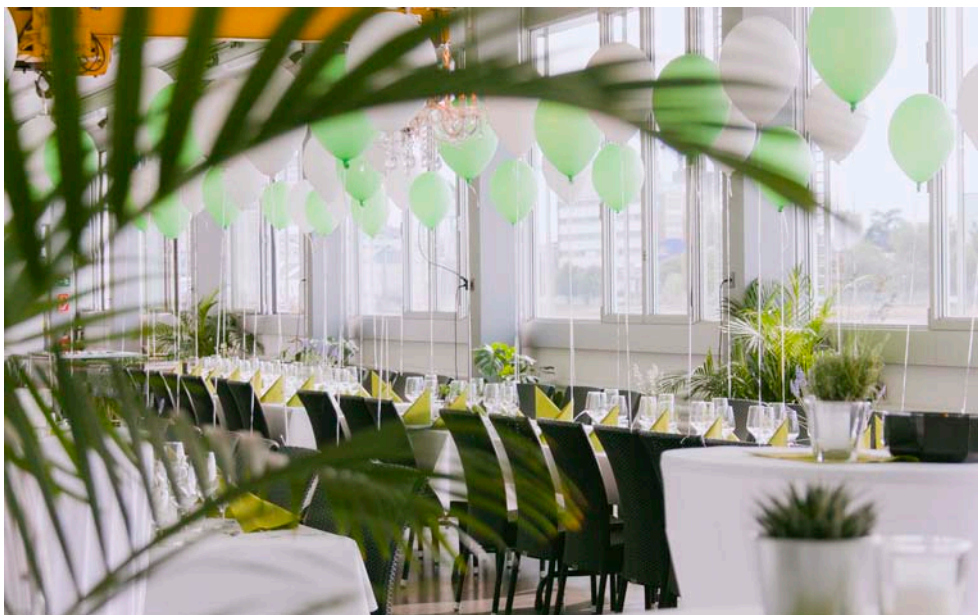
81



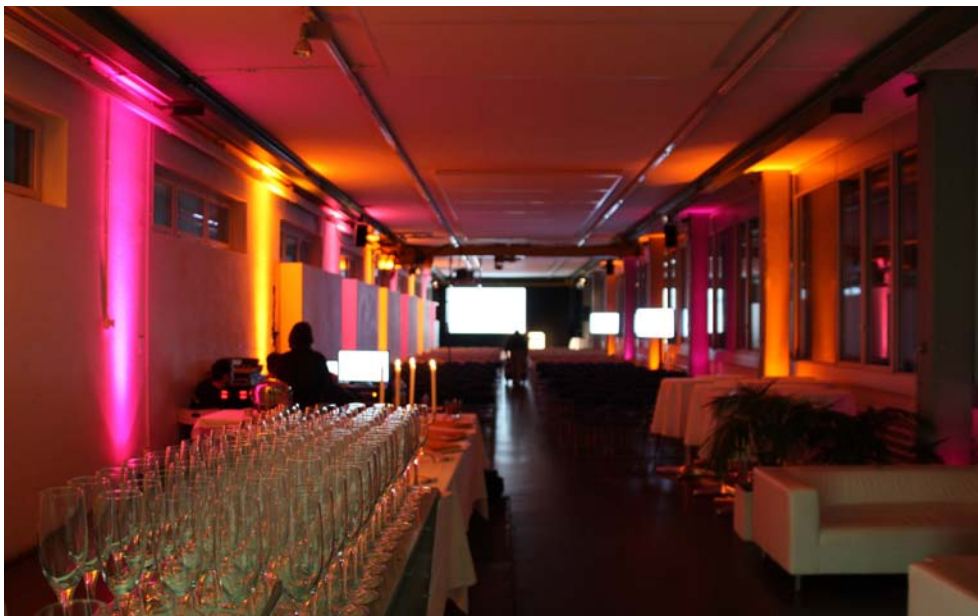
APÉRO

240







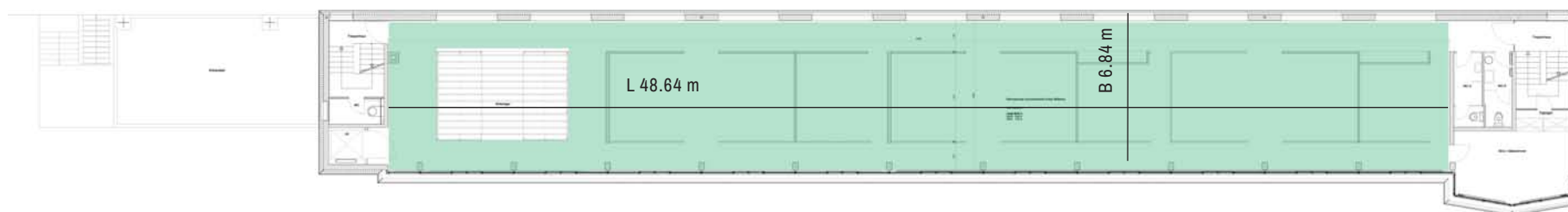


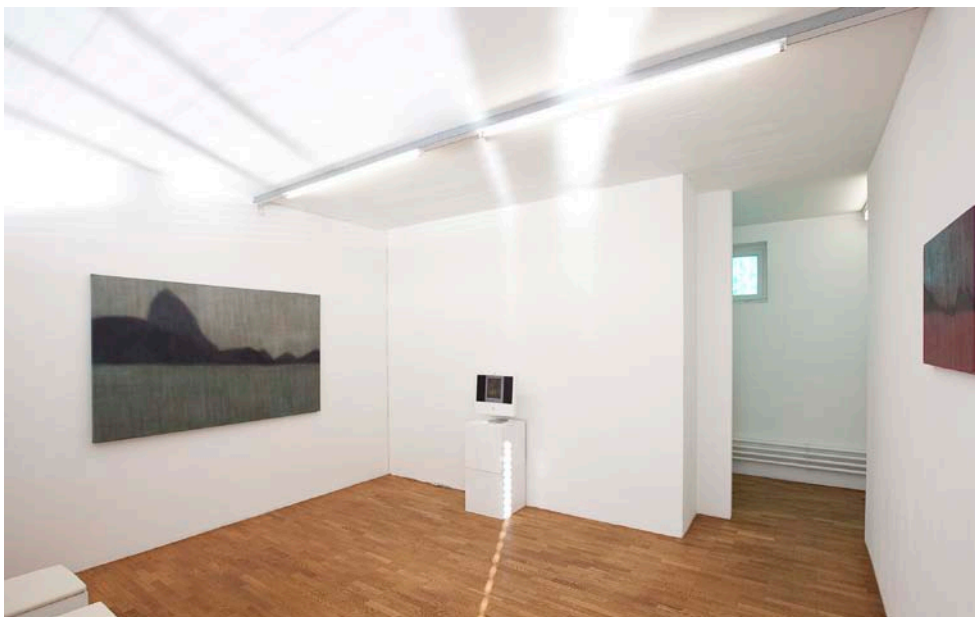
HARDFACTS

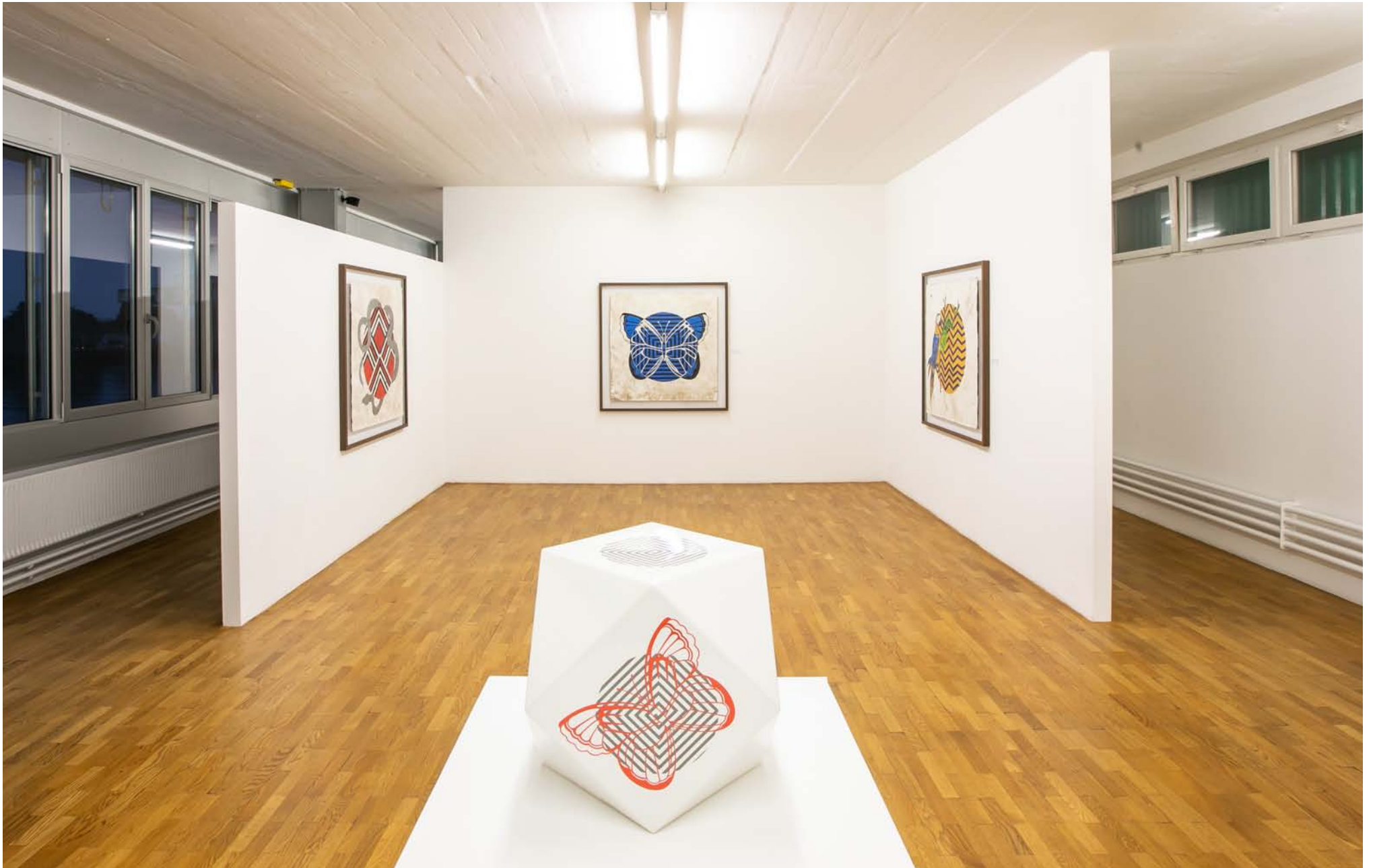
- total surface 326 m²
- max. capacity 120 people
- 2 separate entrances
- residents free area
- 2 Sennheiser microphones
- toilets w/m
- dimensions:
max. L 48.64 m / W 6.84 m / H 2.73 m
- delivery by lift:
L 1.08 m / W 1.52 m / H 2.00 m
- cabinet for workshops
(3 x 34.50 m² / 3 x 17.25 m²)
- extensive electricity supply 1 X 63 A, 1 x 16 A
- wifi & phone line, Bose Hi-Fi
- min 1000.- CHF

SURFACES

				
CONCERT	DINNER	GALA	U-SHAPE	APÉRO
3 x 25	—	—	3 x 9	120





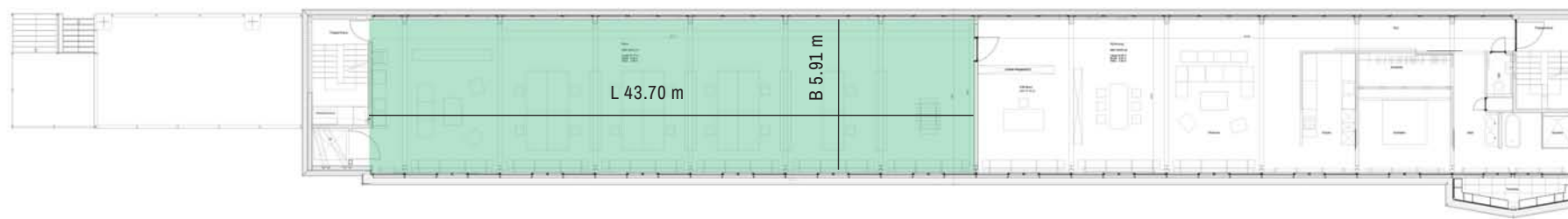


HARDFACTS

- total surface 185 m²
- max. capacity 50 people
- residents free area
- dimensions:
max. L 43.70 m W 5.91 m H 3.25 m
- delivery by lift:
L 1.08 m W 1.52 m H 2.00 m
- cabinets for workshops
(3 x 34.50 m² / 3 x 17.25 m²)
- extensive electricity supply 1 X 36 A
- wifi & phone line, Bose Hi-Fi
- min 650.- CHF

SURFACES

KONZERT	DINNER	GALA	U-FORM	APÉRO
80	72	70	45	100



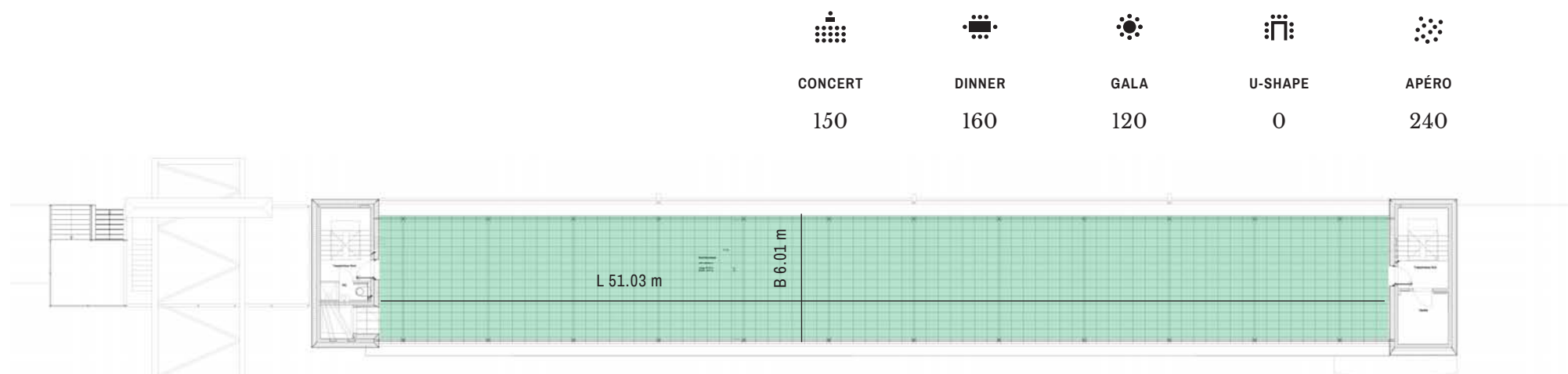




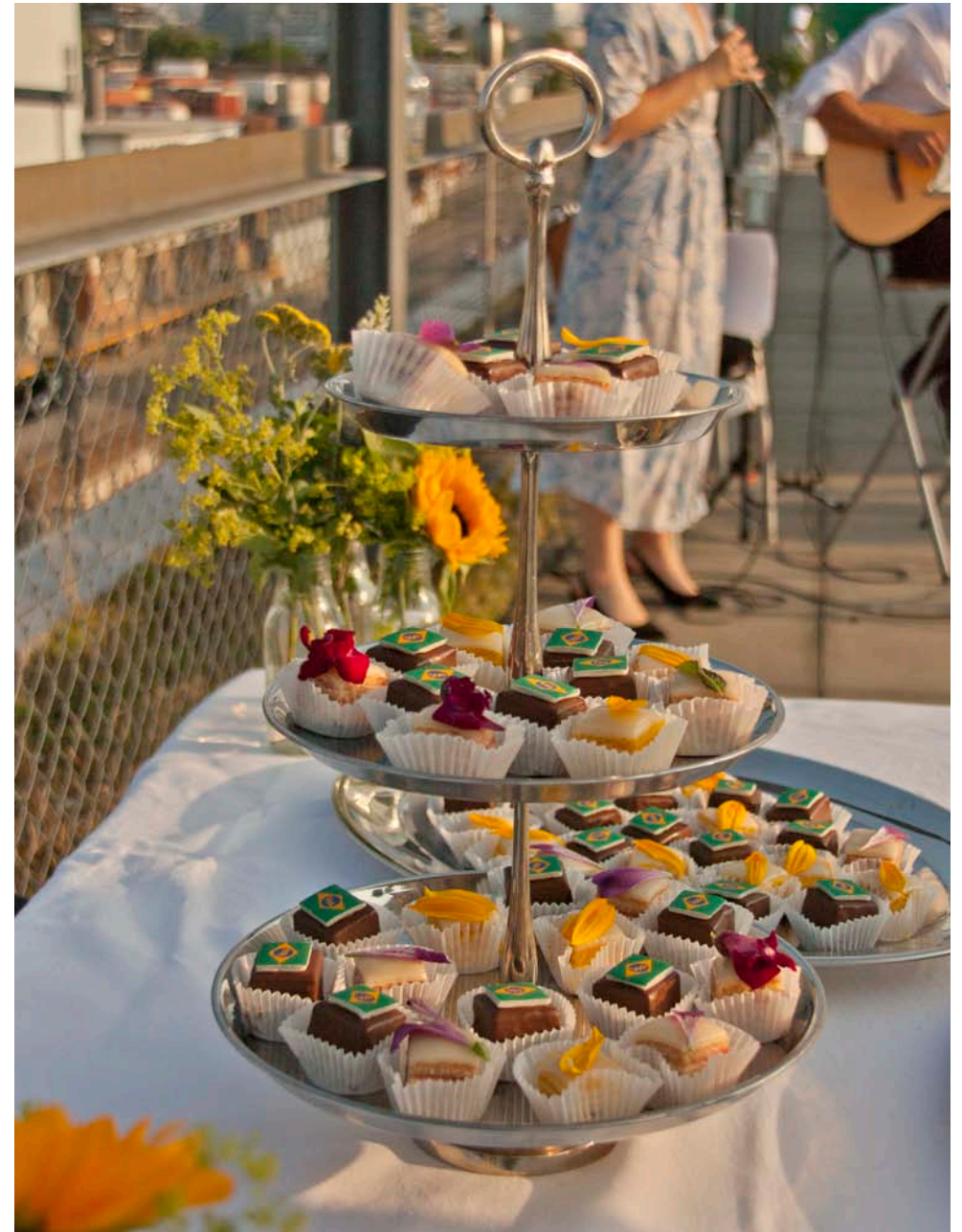
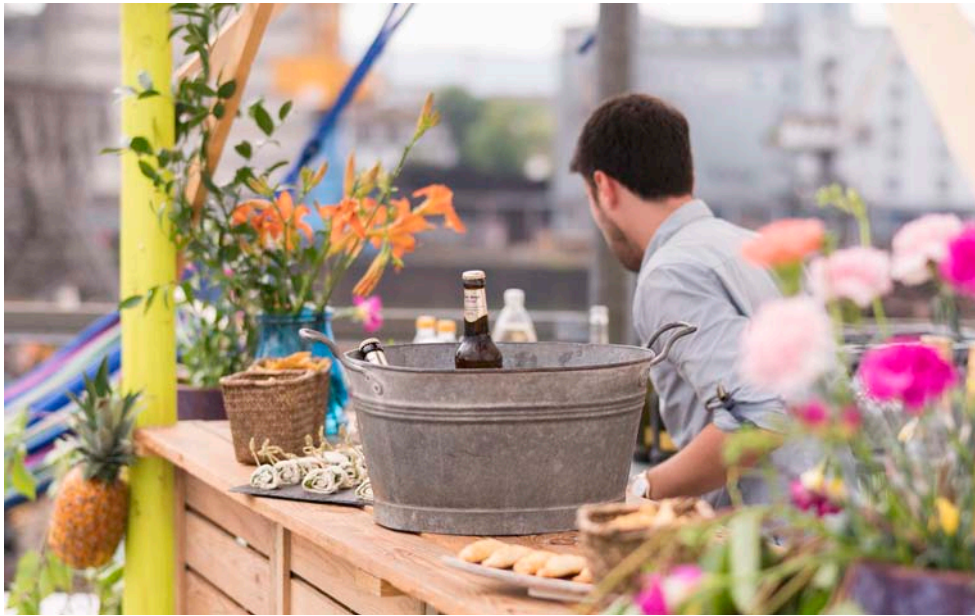
HARDFACTS

- total surface 310 m²
- max. capacity 240 people
- 2 separate entrances
- residents free area
- dimensions:
L 51.03 m W 6.01 m
- delivery by lift:
L 1.08 m / W 1.52 m / H 2.00 m
- extensive electricity supply 2 x 16 A
- possible extension electricity supply 1 X 63 A
- toilets w/m
- min 1000.- CHF

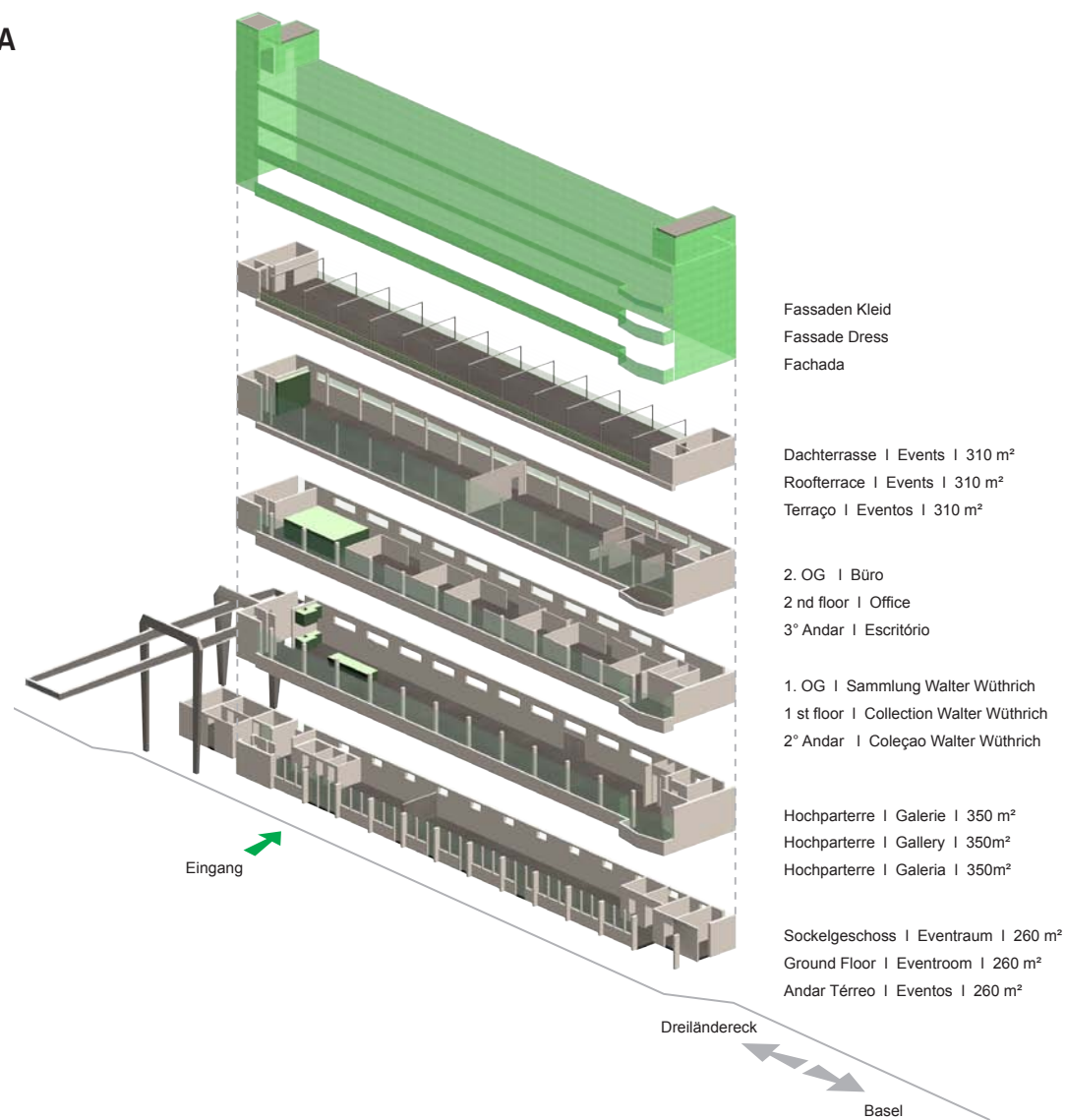
SURFACES







EXPLODED VIEW – BUILDING STIFTUNG BRASILEA



AUTOBAHN SWITZERLAND A2

- Autobahn A2 direction Karlsruhe
- Exit Basel-Nord / Kleinhüningen / Weil am Rhein
- 3rd traffic light direction Kleinhüningen / Dreiländereck
- along Hochbergerstrasse, 1 km straight ahead
- cross railway lines and follow the signage Dreiländereck / Brasilea until the carpark beside our green Foundation building.
- There's public parking space available in front of the Brasilea Foundation.

AUTOBAHN GERMANY A5

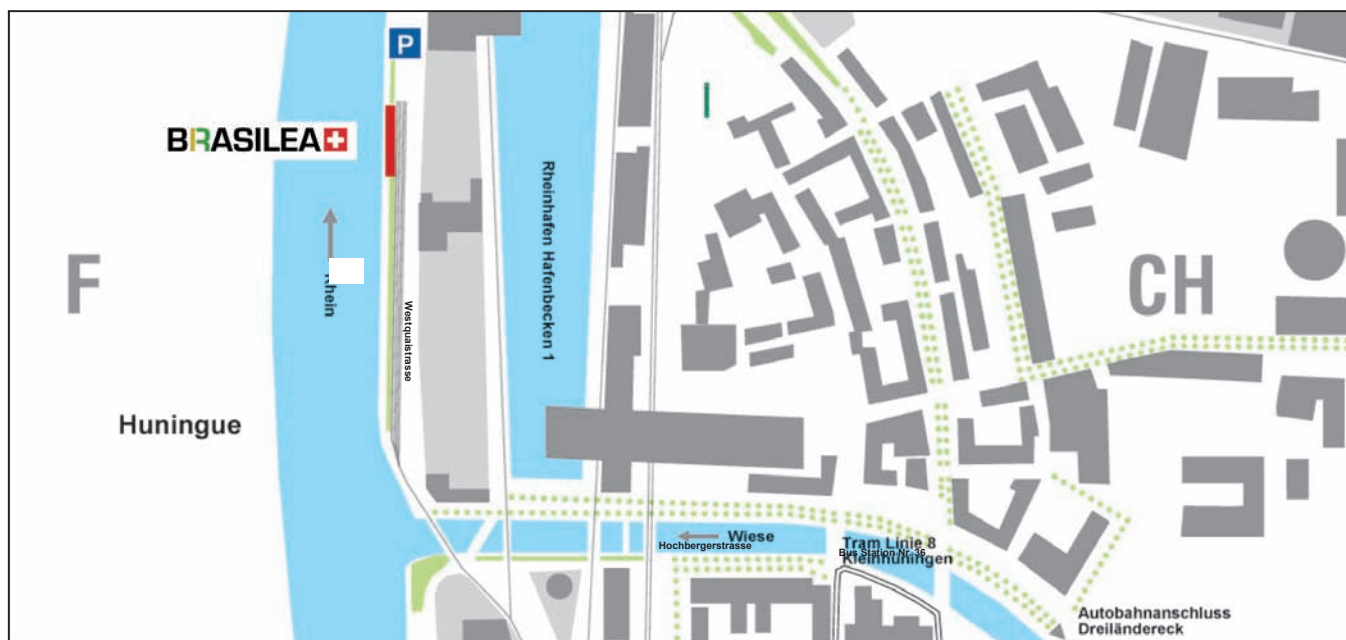
- Autobahn A5 direction Basel
- Exit Basel-Nord/Kleinhüningen - traffic light, turn right direction Kleinhüningen
- along Hochbergerstrasse, 1 km straight ahead
- cross railway lines and follow the signage Dreiländereck / Brasilea until the carpark beside our green Foundation building.
- There's public parking space available in front of the Brasilea Foundation.

TRAM FROM BASEL SBB SWISS RAILWAY STATION

- Take tram No. 8 until the station „Kleinhüningen“.
- Thence it's a 8 minute walk along Wiese and Rhine rivers towards “Dreiländereck”.

BUS FROM BADISCHER BAHNHOF GERMAN RAILWAY STATION

- Take Bus No. 36 towards Kleinhüningen or
- Take tram No. 6 direction towards Allschwil, transfer at Claraplatz to tram No. 8 until the station „Kleinhüningen“.



FAQS AND POLICIES

- Brasilea can be rented after arrangement in the period from Monday to Sunday without curfews. There are no restrictions on the roof terrace until 22:00. Background music is allowed from 22:00 - 24:00. After 24:00 the roof terrace must be closed. Windows (indoor) must be closed from 22:00.
- For one-day events, the facilities are available from 08:00 - 17:00 hours. Deviations are to be discussed with Brasilea. Their use over the specified period will imply a 65 CHF fee per additional hour. The duration of half-day events is limited to 4.5 hours. If the duration is exceeded, the flat daily rate will be applied.
- Weekend rent: Valid until 02:00 am. From this time on, event support will be charged at 150 CHF/ h per additional hour.
- All rental prices include assembly and dismantling, event support (-2:00) and a cleaning fee. VAT is not to be paid by the Foundation.
- Brasilea recommends four catering partners. The tenant is basically free to choose a catering company. It is presupposed that it concerns a professional company that takes over the entire restoration task. Deviations are to be discussed with Brasilea.
 - Small items such as table linen, kitchenware, glasses etc. are not available and must be brought along by the catering company.
 - The organizer can have leftovers of decoration material, seminar documents etc. disposed by Brasilea. From 50 L a disposal fee of 25 CHF is charged.
 - Smoking is prohibited in all rooms.
 - All floors are connected by a lift and are barrier-free.
 - Concerts or any other musical performances must be arranged with Brasilea.
 - The cancellation of an event confirmed in writing is possible free of charge up to 90 days before the event. For cancellations up to 45 days before the event 50% of the rent value will be charged excluding the cleaning fee and the event support. A later cancellation requires the payment of 100% of the rental price.
- 57 public parking spaces are available right in front of Brasilea. The parking fee can be paid locally in CHF and EUR or cashless via the Parkingpay App. The parking rates are valid from Monday to Saturday from 06:00 to 24:00. Up to 5 hours the amount of 1.10 CHF / h will be charged. From 6 hours 1.60 CHF / h will be charged.
- With the booking of the location, the organizer of Brasilea allows the use of personal images for the use on the website and social media channels (facebook, instagram). Personal images in this sense are photos, graphics, or video publications on which people can be individually recognized. The granting of rights takes place without remuneration and also includes the right to edit, as far as it is not distorting. Insofar as not revoking the consent, this shall apply indefinitely. The consent is voluntary. The refusal of the consent or its revocation does not result in any disadvantages.

CONTACT



DELIVERY ADDRESS

BRASILEA Stiftung
Postfach, Westquaistrasse 39
CH - 4019 Basel

MAILING ADDRESS

BRASILEA Stiftung
Westquaistrasse 39, Dreiländereck
CH - 4057 Basel

RENTAL INQUIRIES

Stiftung BRASILEA
+41 (0)61 262 39 39
info@brasilea.com
www.brasilea.com

COPYRIGHT

Brasilea retains the rights of all concepts, drafts, graphics, drawings and other documents created by us. A transfer of rights requires a written agreement.
Brasilea © BASEL 07.5.2019

RECOMMENDATIONS

CATERING

Albrecht Catering - Christine Albrecht
+41 61 643 22 22, info@catering-basel.ch,
www.catering-basel.ch
Baselstrasse 15, CH-4125 Riehen

Basler Personenschiffahrts-Gesellschaft AG
+41 61 63 99 545, info@bpg.ch,
www.bpg.ch
Westquaistrasse 62, CH-4057 Basel

Bisskid AG - Mike Hänggi
+41 61 554 66 72, kontakt@bisskid.com,
www.bisskid.com
Baselstrasse 71, CH-4142 Münchenstein

Landmetzgerei Senn GmbH - Martin Senn
+49 7621 62598, info@partyservice-senn.de
www.partyservice-senn.de
Hauptstraße 28, D-79591 Eimeldingen

Surprise Catering - Jacqueline Urben
+41 61 751 48 91, info@catering-surprise.ch,
www.catering-surprise.ch
Kirchstrasse 8, CH-4202 Duggingen

DRINKS

Ullrich Paul AG - Jacqueline Ullrich
+41 61 338 90 90, info@ullrich.ch,
www.ullrich.ch
Aliothstrasse 40, CH - 4142 Münchenstein

RENTAL FURNISHINGS, -TENTS, -TABLEWARE / TABLEWASH / ETC.

eventtrend GmbH - Björn Walden
+49 7621 116 14 100, info@eventtrend.de,
www.eventtrend.de
Reutackerstraße 44, D-79591 Eimeldingen

Mietzelte Huber AG - Dominique Reinhard
+41 61 426 92 22,
dominique.reinhard@mietzelte-huber.ch,
www.mietzelte-huber.ch
Baslerstrasse 5, CH-4102 Binningen

CAKES & SWEETS

Wencke Schmid
+41 79 7768918, wencke@wenckeschmid.ch,
www.wenckeschmid.ch
Oetlingerstrasse 63, CH-4057 Basel

SHIP TRANSPORT

Rhytaxi Basel GmbH - René Didden
+41 61 273 14 14, info@rhytaxi-basel.ch,
www.rhytaxi-basel.ch
Westquaistrasse 39, CH-4057 Basel

Basler Personenschiffahrts-Gesellschaft AG
+41 61 63 99 545, info@bpg.ch,
www.bpg.ch
Westquaistrasse 62, CH-4057 Basel

EVENTORGANISATION

Zeisch GmbH
+41 61 599 58 29, info@zeisch.ch,
www.zeisch.ch
Sternenhofstrasse 17, CH-4153 Reinach

LIMES & CRUSHED ICE

JOS. PFAFF AG - Josef Pfaff
+41 61 307 93 83, j.pfaff@jospfaff.com,
www.jospfaff.com
Binningertrasse 148, CH-4123 Allschwil

RECOMMENDATIONS

HOTEL PARTNER

Hotel Stücki - welcome hotels
Tel. +41 61 638 34 34 stuecki@welcomehotels.ch,
www.hotel-stuecki.ch Badenstrasse 1,
CH-4019 Basel
Buchungscod: WELCOMEBRAS

ELEKTRO INSTALLATIONS

Morisset & Partner AG - Dominique Morisset
+41 61 383 13 26, info@morisset-partner.ch,
www.morisset-partner.ch
Badenweilerstrasse 34, CH - 4057 Basel

CLEANING SERVICE

Renato Miklos - Hauswartung Reinigung Umzüge
+41 61 534 80 19, info@rm-miklos.ch,
www.rm-miklos.ch,
Schützenrainweg 48, CH-4125 Riehen